

AASHTO T-3 TRIAL DESIGN BRIDGE DESCRIPTION

State: Missouri

Trial Design Designation: MO-2

Bridge Name: _____

Superstructure Type: Prestressed precast concrete "I" girder

Span Length(s): Three spans @ 59.2ft.-60.0ft.-59.2ft.

Substructure Type: Three 3.0ft dia. reinforced concrete columns per bent

Foundation: Cast-in-place concrete pile with 14in. dia. steel casing

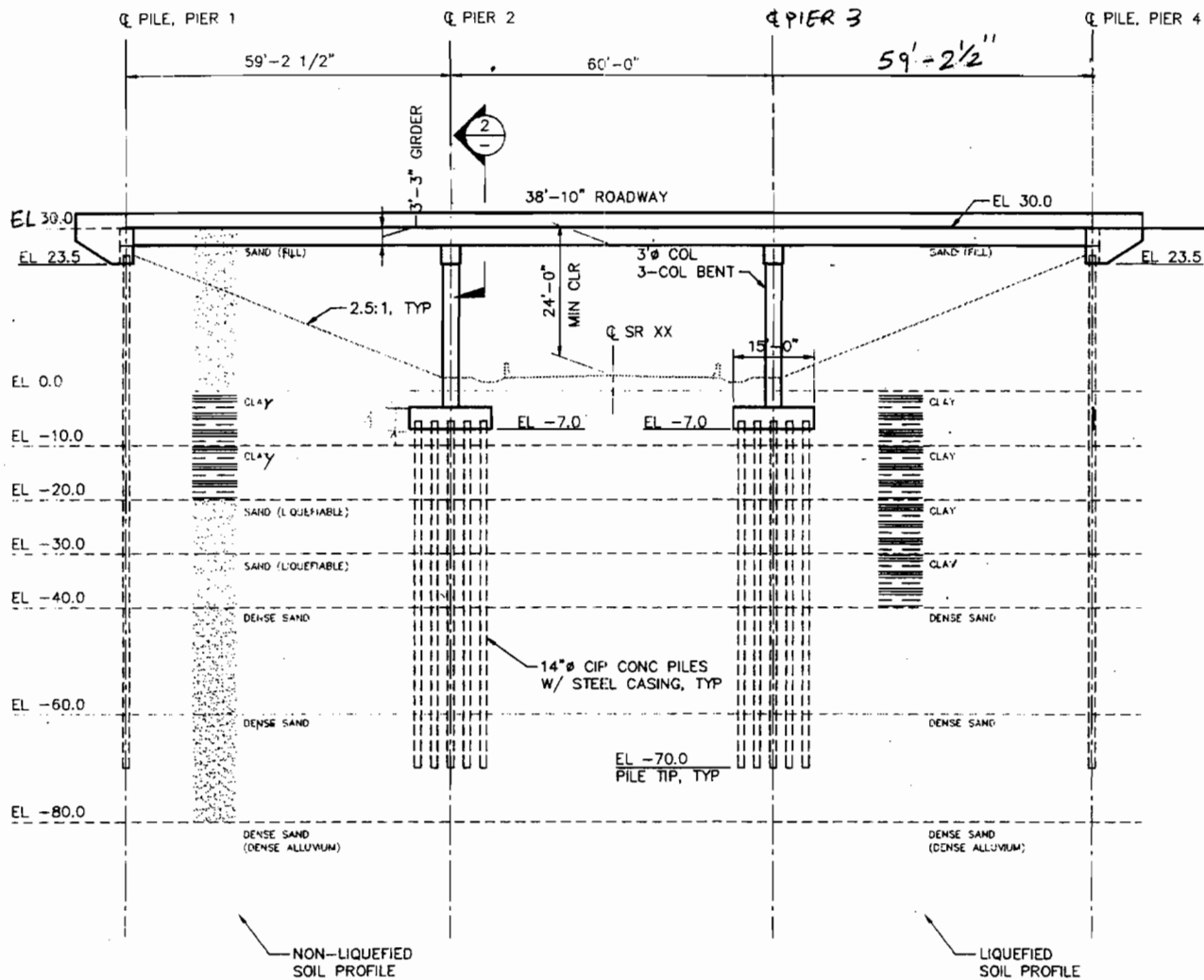
Abutments: Integral diaphragm wall supported on 14in. dia. CIP pile

Seismic Design Category (SDC): _____

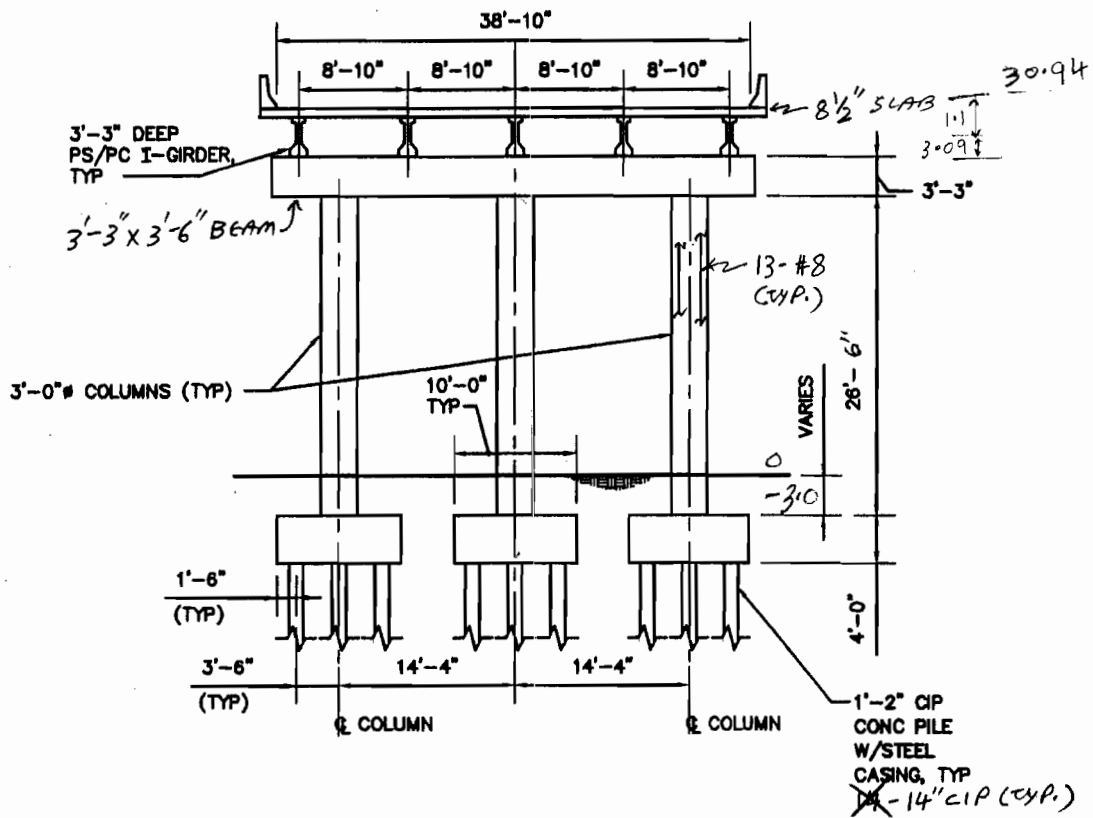
Seismic Design Strategy (Type 1, 2 or 3): _____

Design Spectral Acceleration at 1-second Period (S_{D1}): _____

Additional Description (Optional): Trial design is currently being done for this bridge.

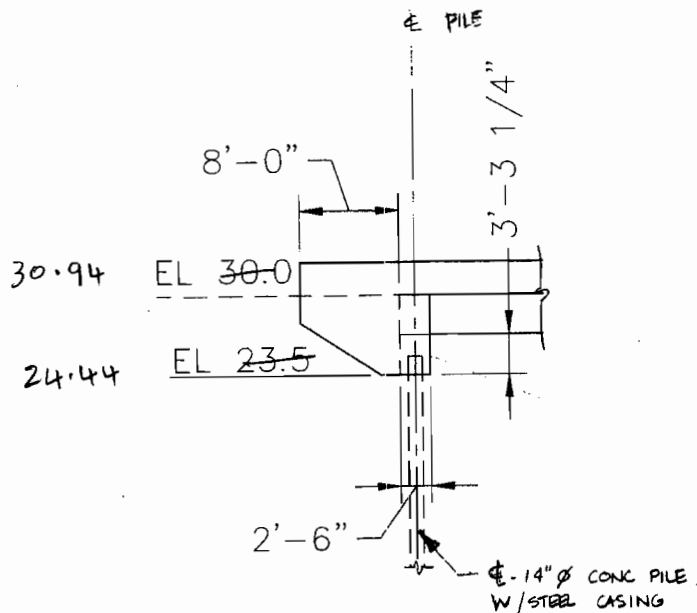


SP



1 SECTION-INTERMEDIATE PIER 9
 SCALE: 1/16"=1'-0"

Elevation of Intermediate Pier



Elevation of Integral Abutment