

# OpenSees: Static, Cyclic, and Dynamic Analysis Examples

Frank McKenna

OpenSees Users Workshop

Berkeley, CA

August 14, 2006

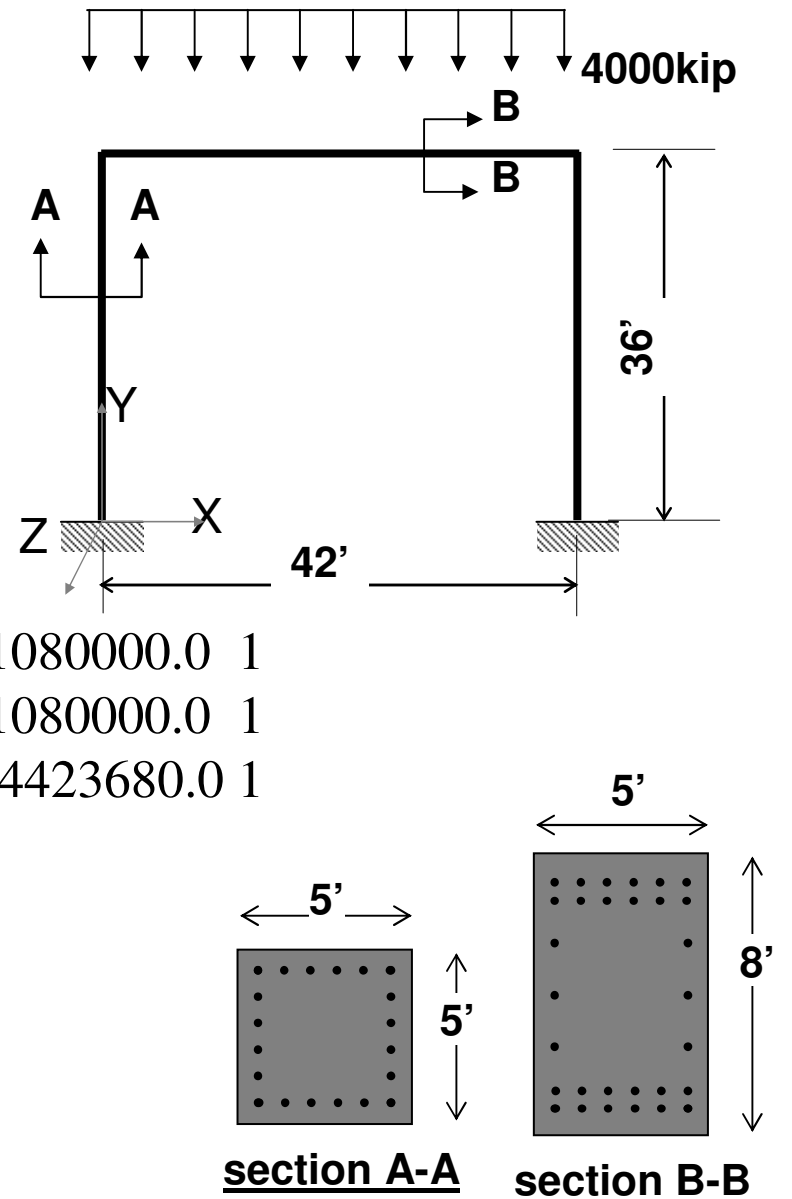
Sponsored by the National Science Foundation  
through the Pacific Earthquake Engineering Research Center  
and through NEESit



# Model (example.tcl):

```
model Basic -ndm 2 -ndf 3
node 1 0.0 0.0
node 2 504.0 0.0
node 3 0.0 432.0
node 4 504.0 432.0
fix 1 1 1 1
fix 2 1 1 1
mass 3 5.18 0.0 0.0
mass 4 5.18 0.0 0.0
geomTransf Linear 1
element elasticBeamColumn 1 1 3 3600.0 4227.0 1080000.0 1
element elasticBeamColumn 1 4 3 3600.0 4227.0 1080000.0 1
element elasticBeamColumn 3 3 4 5760.0 4227.0 4423680.0 1
pattern Plain 1 Linear {
  load 3 0.0 -2000.0 -168074.0
  load 4 0.0 -2000.0 168074.0
}
```

**source example.tcl**



# Gravity Load Analysis

```
# first source in the model
source example.tcl

# create analysis & perform analysis
constraints transformation
numberer RCM
system BandGeneral
test NormDispIncr 1.0e-6 6 2
algorithm Newton
integrator LoadControl 0.1
analysis Static
analyze 10

# look at what happened to node 3
print node 3
```

\* We will call this file example1.tcl for future examples

QuickTime™ and a  
TIFF (LZW) decompressor  
are needed to see this picture.

# Cyclic Lateral Load Analysis

```
# first source in the model and do gravity load analysis  
source example1.tcl
```

```
# set gravity loads constant & reset time in domain  
loadConst -time 0.0
```

```
# create load pattern for lateral loads  
pattern Plain 2 Linear {  
    load 3 200.0 0.0 0.0  
    load 4 200.0 0.0 0.0  
}
```

```
# do some cyclic analysis  
foreach {numSteps stepSize} {10 0.1 10 -0.1 10 -0.1 10 0.1 10 0.1} {  
    integrator LoadControl $stepSize  
    analyze $numSteps  
  
    set time [getTime]  
    set disp [nodeDisp 3 1]  
    puts "Time: $time Displacement $disp"  
}
```

QuickTime™ and a  
TIFF (LZW) decompressor  
are needed to see this picture.

# Transient Analysis - Uniform Excitation

```
# first source in the model and do gravity load analysis
source example1.tcl

# set gravity loads constant & reset time in domain
loadConst -time -0.01

# create load pattern
set motion IELC180
source READSMDFile.tcl
ReadSMDFile $motion.AT2 $motion.acc dt
set accelSeries "Path -filePath $motion.acc -dt $dt -factor 386.4"
pattern UniformExcitation 2 1 -accel $accelSeries

# set damping factors
rayleigh 0.0 0.0 0.0 0.0 0.0

# create the analysis
wipeAnalysis
System ProfileSPD
Test NormDispIncr 1.0e-16 10
Algorithm Newton
Integrator Newmark 0.5 0.25
Analysis Transient

# create a recorder
recorder Node -time -file example3.out -node 3 -dof 1 disp

analyze 4000 $dt
```

# Transient Analysis - MultiSupport Excitation

```
# first source in the model and do gravity load analysis
source example1.tcl

# set gravity loads constant & reset time in domain
loadConst -time -0.01

# remove some sp constraints
remove sp 0
remove sp 3

# create load pattern
set motion IELC180
source READSMDFile.tcl
ReadSMDFile $motion.DT2 $motion.disp dt
set dispSeries "Path -filePath $motion.disp -dt $dt -factor 0.3937"
pattern MultiSupport 2 {
    groundMotion 5 Plain -disp $dispSeries
    imposedMotion 1 1 5
    imposedMotion 2 1 5
}

# set damping factors
rayleigh 0.0 0.0 0.0 0.0 0.0

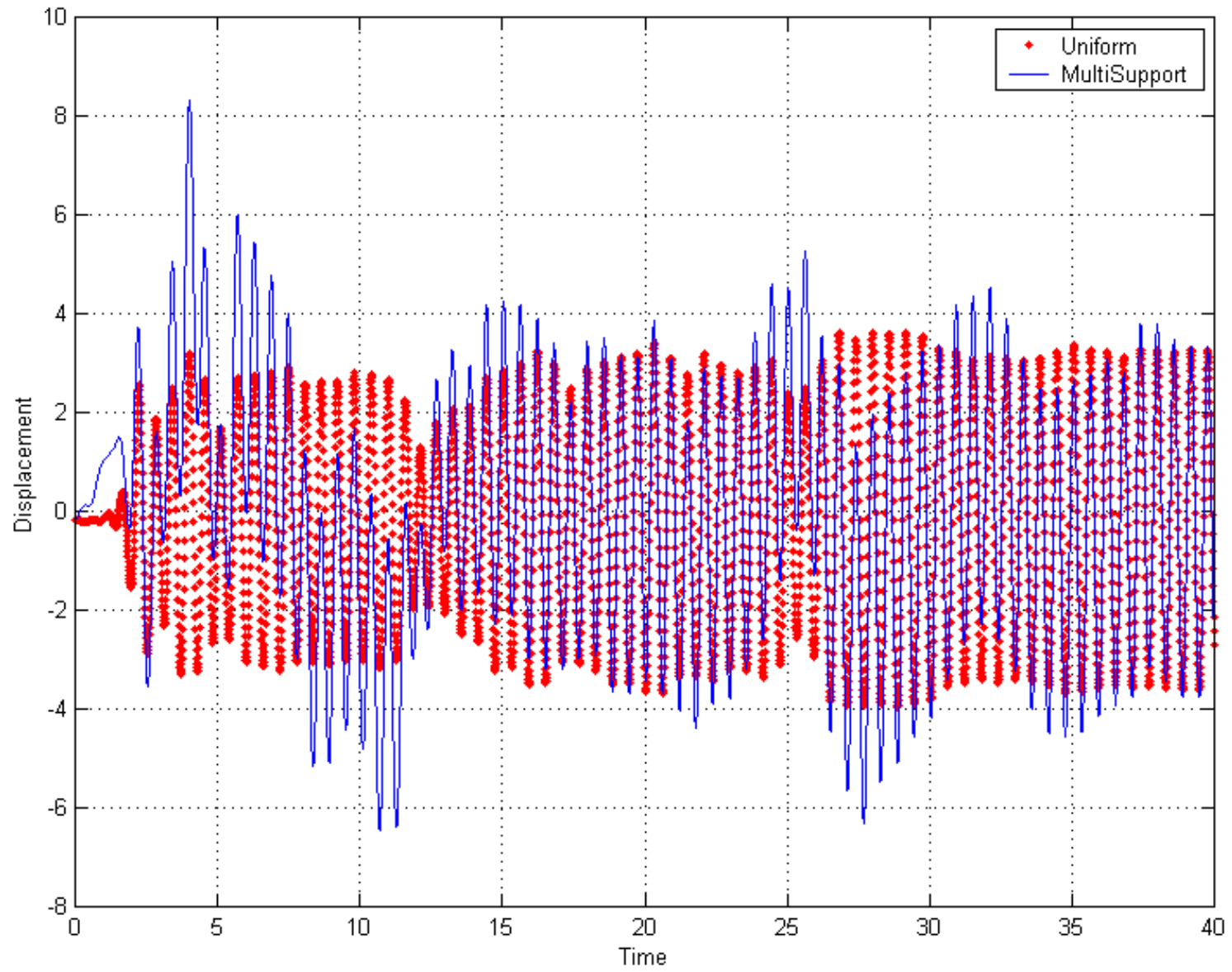
# create the analysis
wipeAnalysis
system ProfileSPD
test NormDispIncr 1.0e-16 10
algorithm Newton
integrator Newmark 0.5 0.25
analysis Transient

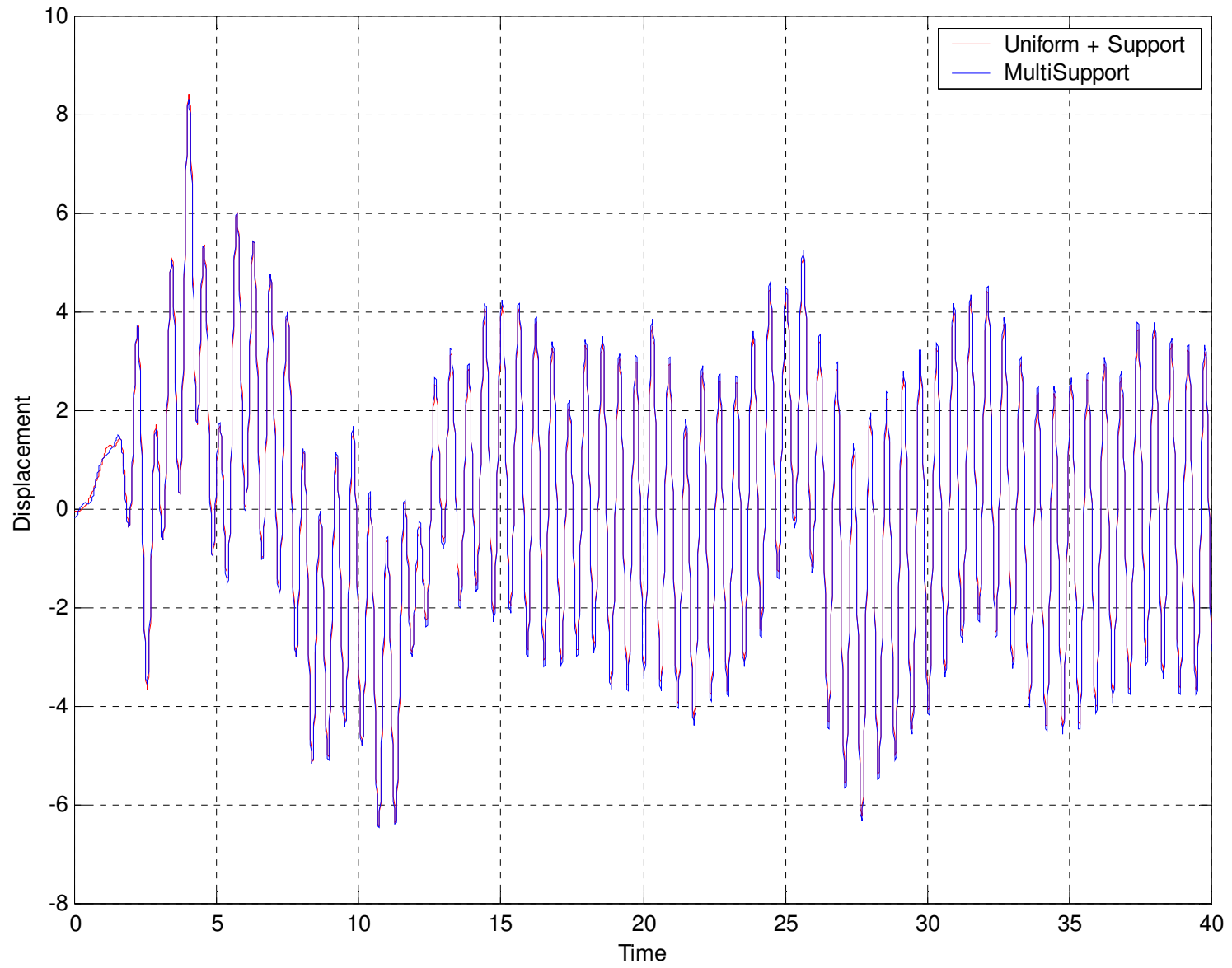
analyze 4000 $dt

# set damping factors
rayleigh 0.0 0.0 0.0 0.0 0.0

# create a recorder
recorder Node -time -file example4.out -node 3 -dof 1 disp
```







# Parameter Study - Response Spectra

```
source READSMDFile.tcl
modelBuilder BasicBuilder -ndm 1 -ndf 1
```

```
# set a bunch of parameters
set PI 3.14159265
set g 386.4
set TnMin 0.1; #min period
set TnMax 2.0; #max period
set TnIncr 0.1; #period incr
set M 1.0;      #mass
set A 1.0;      #area
set L 1.0;      #length
set motion ELCENTRO
set outFileID spectrum.dat
```

```
# open output file
Set outFileID [open $outFileID w]
```

```
#create accel series
ReadSMDFile $motion.AT2 $motion.acc dt
Set accelSeries "Path -filePath $motion.acc \
-dt $dt -factor $g"
```

```
# loop over period range
Set Tn $TnMin
while {$Tn <= $TnMax} {
  wipe
  set w [expr 2.0 * $PI / $Tn]
  set K [expr $w * $w * $M]
  set E [expr $k * $l / $A]
```

```
node 1 0.0
node 2 $l -mass $M
fix 1 1
uniaxialMaterial Elastic 1 $E
element truss 1 1 2 $A 1
pattern UniformExcitation 2 1 -accel $accelSeries
rayleigh 0.0 0.0 0.0 0.0 0.0
```

```
recorder EnvelopeNode -file envelope.out -node 2 -dof 1 disp
system ProfileSPD
test NormDispIncr 1.0e-16 10
algorithm Newton
integrator Newmark 0.5 0.25
analysis Transient
analyze 2000 $dt
```

```
if [catch {open envelope.out r} inFileID]
  puts puts "ERROR - could not open file"
```

```
set min [gets $inFileID]
set max [gets $inFileID]
set absMax [gets $inFileID]
close $inFileID
puts outFileID "$Tn $absmax"
set Tn [expr $Tn + $TnIncr]
}
close $outFileID
```

QuickTime™ and a  
TIFF (LZW) decompressor  
are needed to see this picture.